

Reliability in Action

Wheeled Loader LG946L



Wheeled Loader LG946L



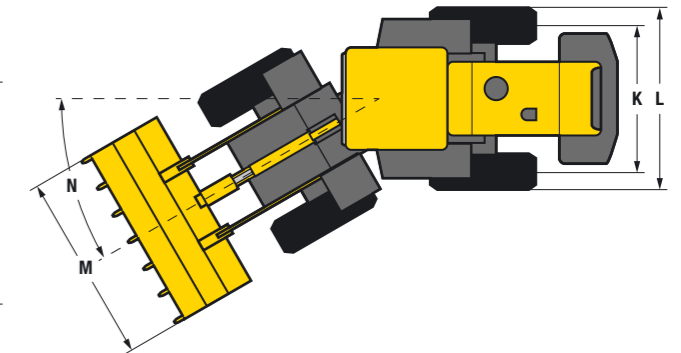
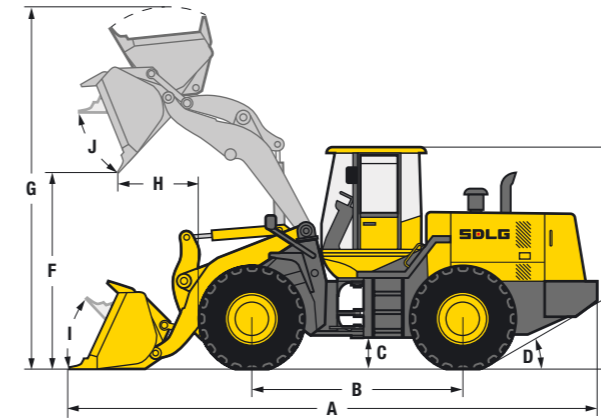
LG946L

Powered by the Weichai Deutz engine and equipped with a smooth power shift transmission, the 12.7 tonne LG946L is an excellent utility machine. It has a robust structure and easy, comfortable single joystick operation. All SDLG wheeled loader models are rigorously tested to ensure reliability in action.

- The box structure frame of the LG946L gives best-in-class robustness.
- The access panels on the rear of the machine swing outwards to make daily checks and maintenance much easier.
- Single joystick operation of loader arm and bucket for easy and comfortable operation.

There is a wide range of attachments available for the LG946L including:

- Different size standard buckets
- Side tip bucket
- Multi-function bucket (4-in-1)
- Pallet forks
- Log grapples
- Snow blade
- Attachment bracket and associated attachments



Description	Specification
Operating weight	12 700 kg
Standard bucket capacity	2.3 m ³
Lift capacity (rated load)	4 000 kg
Static tipping load at full turn	8 155 kg
Maximum breakout force	125 kN
Dimensions	
A. Overall length	7 295 mm
B. Wheel base	2 880 mm
C. Ground clearance	440 mm
D. Approach angle back	28°
E. Overall height	3 240 mm
F. Dump height	2 950 mm
G. Overall operating height	4 897 mm
H. Dump reach	1 055 mm
I. Roll back angle ground level	45°
J. Roll back level full height	62°
K. Track width	2 054 mm
L. Machine width	2 574 mm
M. Bucket width	2 766 mm
N. Steering angle	38°
Engine	
Model	Weichai Deutz WP6G160E201
Type	Watercooled, 4 stroke, 6 cylinders in line, direct injection, turbo charged
Rated power (SAE J1349)	118 kW @ 2 000 rpm
Maximum torque	640 Nm
Cylinder bore stroke	105 / 130 mm

Description	Specification
Transmission	
Type	Countershaft-type, electro-hydraulic shift
Number of gears	2 forward, 1 reverse
Maximum travel speed	Forward 38 km/h Reverse 17 km/h
Drive type	4 wheel drive
Tyre dimension	20.5 - 25
Tyre pressure	Front 48 - 51 psi Rear 41 - 42 psi
Service brake type	Dry disc brake
Parking brake	Air operated internal expansion
Service fill capacities	
Fuel	140 L
Hydraulic oil	124 L
Axles (main and final drives)	2 × 26 L
Engine	18 L
Transmission	44 L
Brake system	4 L
Hydraulics	
Type	Single lever hydraulic pilot control
Boom lift time	5.7 sec
Total cycle time	10.2 sec



SDLG machines are built to be like the people that own them: hardworking, genuine and reliable. Cost effective, robust machines with fuel efficient engines that are easy to operate and easy to maintain.

Everything about SDLG is designed to give you the confidence that you can complete the job to a high standard and on schedule. And when you need parts or service, you can trust your SDLG dealer to deliver on our promise.

When you buy SDLG, you're buying reliability: **Reliability in Action.**



www.sdlg.com